

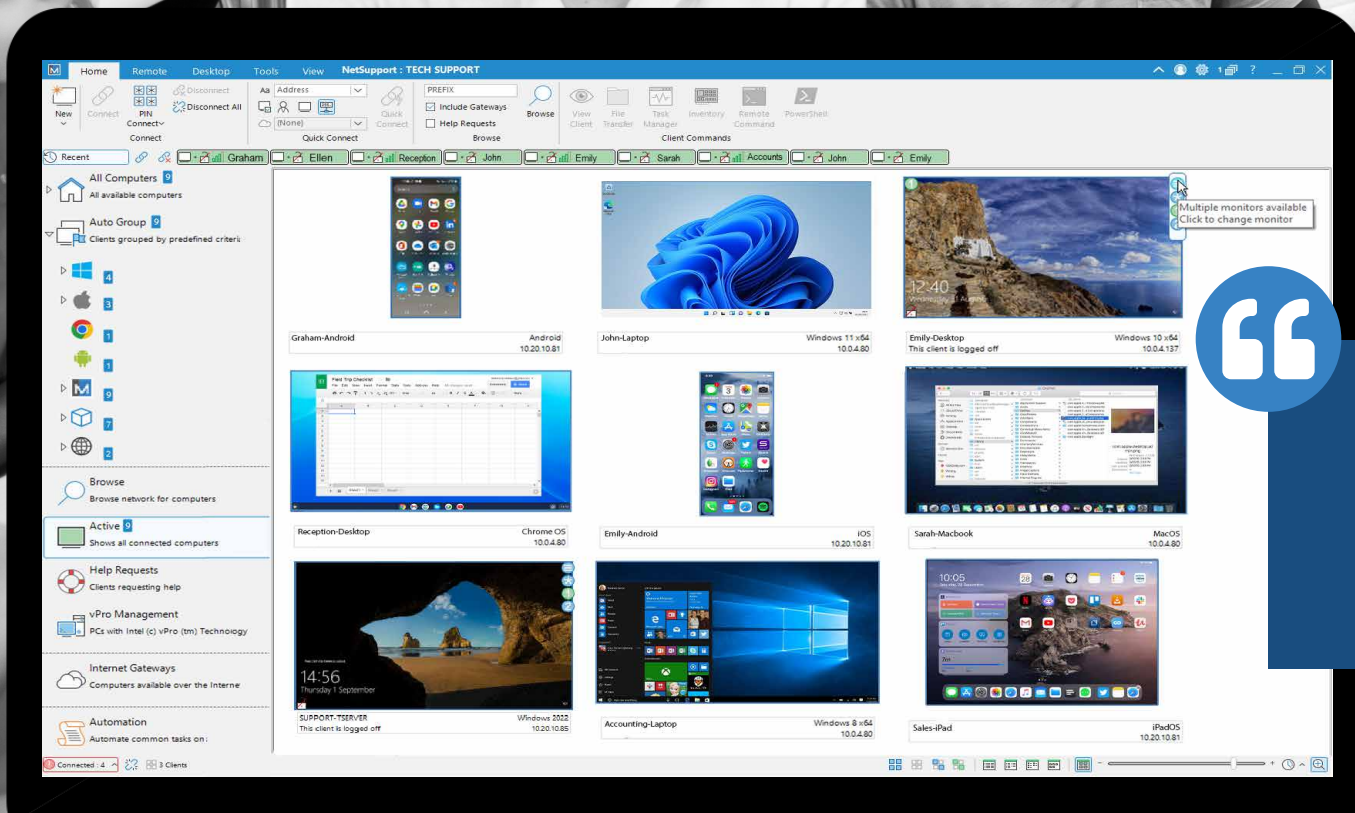


Keep government technology operating securely and effectively with NetSupport

Whether working at federal, state, or local government level, staff in large departments with wide-ranging community responsibilities all depend on secure, responsive technology systems to work effectively and keep sensitive data safe, as they deliver the essential services the public needs.

How can NetSupport's solutions help?

From secure remote control, flexible in-house training, and comprehensive IT Asset Management, our products are tried and trusted by organizations in all kinds of sectors. Providing secure connections to devices, full support, and training to in-office and remote personnel, plus all the ITAM data you will ever need, NetSupport offers you a choice of tools to increase productivity and ROI – and extend the lifecycle of your devices.








NetSupport Manager – secure desktop support and management

For remote desktop management and support, solutions don't come much more highly recommended than our flagship solution, NetSupport Manager. Developed in consultation with industry experts and customers over the last 32 years, it has a loyal user base amongst organizations needing to operate exceptionally secure IT environments, such as pharmaceutical companies, financial institutions, and the military.

Its security credentials are second to none and the fact that all data can be kept securely on-site, without the risk incurred by connecting to a third-party server, means it is trusted by the likes of the Department of Defense, the Naval Education & Training Command, and government departments worldwide.

How can NetSupport Manager transform your IT environment?

With fast connections, multi-platform support, and a comprehensive set of tools for systems management, IT teams can use NetSupport Manager to manage and maintain devices – regardless of their locations – all from a central point.

-  Anytime, anywhere access through secure connections
-  Easy support for one-to-one and one-to-many
-  Robust security including activity logs, 256-bit encryption, smartcard support, AD integration
-  24/7 support for automated machines (e.g. ATMs)
-  Mobile support for staff on the go

“NetSupport Manager’s speed and ease of use were the most important factors in our decision. This is the best remote manager software tool I have used. We are extremely happy.”

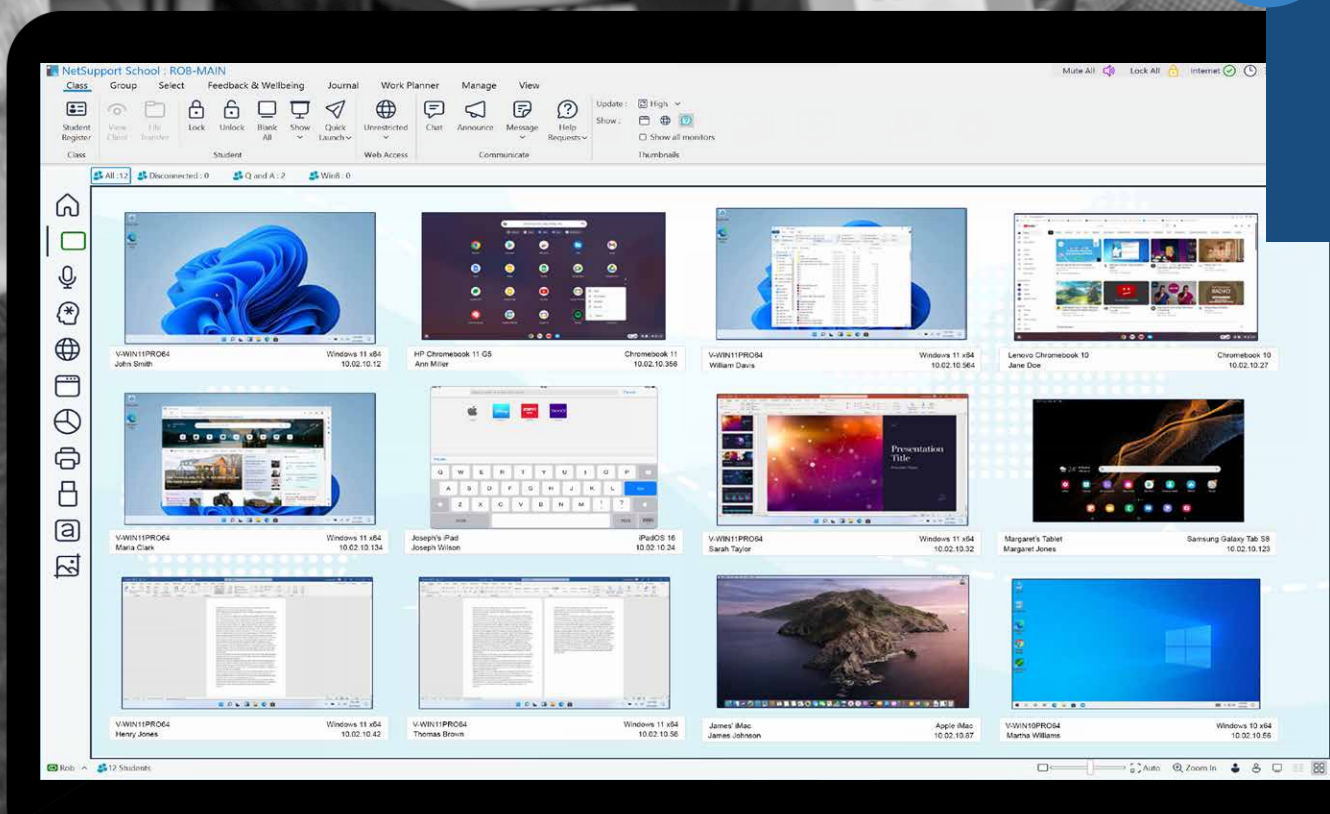
– NY Power Authority

Read IPro’s 2021 review
of NetSupport Manager here.








Discover more about
NetSupport Manager here.





NetSupport School – in-house training has never been easier

Provided along with your NetSupport Manager licenses, NetSupport School isn't just for schools; it offers a wide range of possibilities for training with collaborative instruction, assessment, and group work – as well as allowing tutors to guide and present directly to trainees' devices.

-  Easily connect to roaming trainees with pre-defined class lists.
-  Deliver compelling content with a full range of instruction tools.
-  Test and assess in real time.
-  Save time with automatic hand out and collection of work from trainees' computers.
-  Student Journal ensures trainees have all relevant information for later review.

“The performance of staff has increased as training/
problem-solving is more efficient”

– **Insuring America**

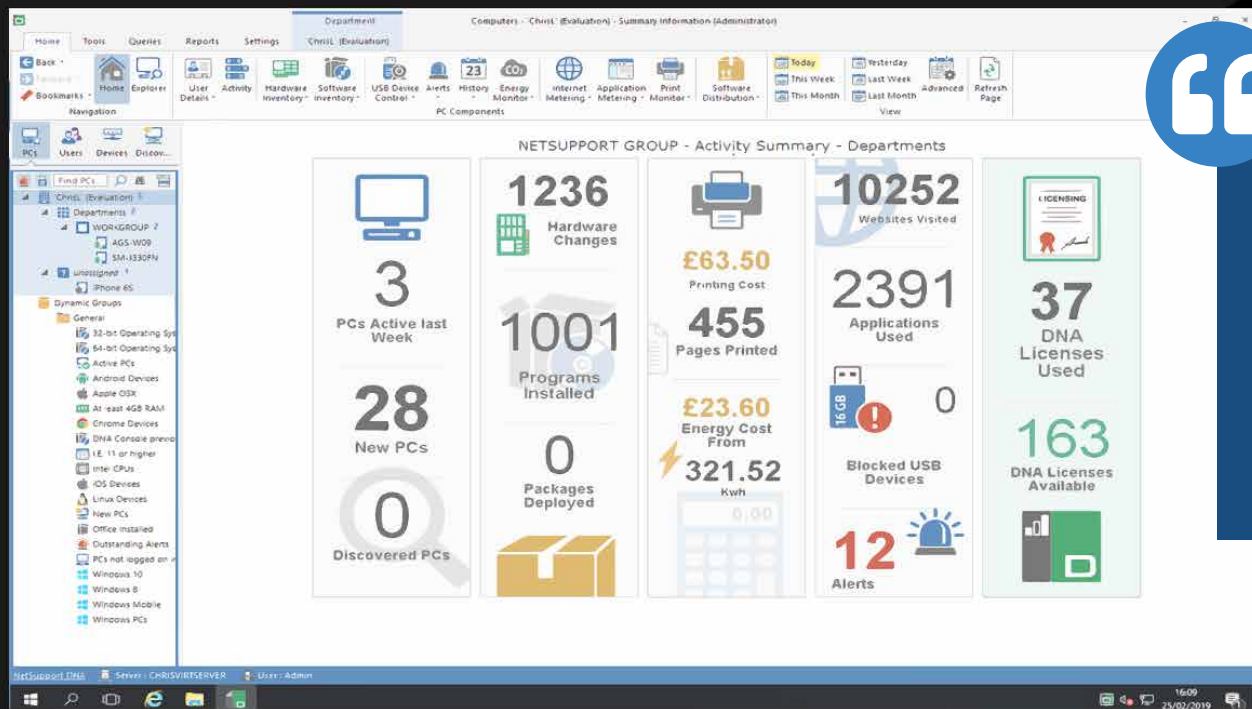
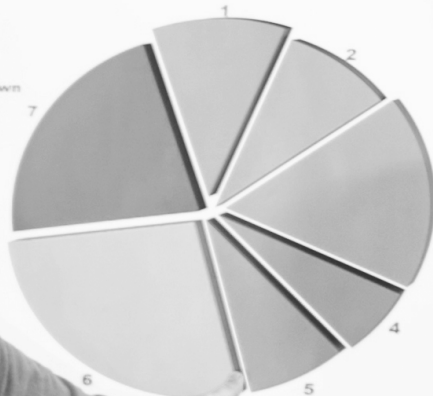


Discover more about delivering
training with NetSupport School here.



Environmental Economics







Annual
Emission
Breakdown
1-7



NetSupport DNA – next-level ITAM for your business

IT Asset Management solutions help to document and manage an organization's IT assets as they progress through the asset lifecycle: from acquisition to installation and configuration, usage, updating, and reassignment – through to decommissioning and disposal.

Customers such as the City of Meridian, City of Dickinson, and Towne of Jackson Hole (WY) find that NetSupport DNA's powerful tools help them to operate efficiently – saving time, money, and resources, as well as increasing productivity and enhancing security through its proactive and automated functions.

-  Save time with automatic discovery of devices.
-  Stay informed with comprehensive hardware/software inventories.
-  Stay productive with application/internet metering.
-  Save money with energy monitoring/power management.
-  Stay secure with USB endpoint security permissions.
-  Get a helping hand from the proactive alerting suite – and much more!

“We found DNA to be more user-friendly and robust than alternative products offered by other vendors. DNA for us is used in a manner to keep staff more accountable for their usage of tech, which in turn means more time spent on work and less time spent surfing the web.”

– **City of Dickinson**

ITAM in an SME white paper



Discover more about
NetSupport DNA here.

Companies already using NetSupport



Ready to find out more?

Sometimes, seeing is believing! With that in mind, we encourage you to book a short demo with a member of our team to see for yourself how NetSupport Manager, NetSupport School, and/or NetSupport DNA could work in your environment, plus ask any questions you need to.

We look forward to meeting you!



Book me in for a demo



Request a quote

over 34
years dev
experience

winner or
finalists in
over 300
awards

over 19
million
users

sold in
over 120
countries

