



NetSupport DNA

Getting Started Guide

Contents

- Installation4**
- System Requirements 4
- Planning an Installation 5
- Starting the Installation 8
- NetSupport Licence Agreement..... 8
- Select Setup Type..... 9
- Custom Setup 10
- SQL Server Installation..... 12
- Setting up the Server 13
- Web Server Database setup 14
- Inter Component Communications 17
- Select Enterprise Type..... 18
- Existing Installation 19
- Installing via Active Directory 20
- Advanced Option - Command Line Installation..... 21
- Upgrading from Existing NetSupport DNA Versions 23
- Installing NetSupport DNA Agent on Mac Systems 24
- NetSupport Browser for iOS 25
- NetSupport DNA Browser for Android 27
- NetSupport DNA Chrome Agent 29
- Using the NetSupport DNA Database Wizard30**
- Install and set up database for use 31
- Set up NetSupport DNA user for accessing the database..... 32
- Set up admin users to access the NetSupport DNA Server .. 33
- Register a Licence..... 34
- Reset System Admin Password 35
- Gateway Settings 36
- Mobile Connection Settings 37
- SNMP Settings..... 38



Miscellaneous settings	39
Starting the NetSupport DNA Console.....	40
Deploying NetSupport DNA Agents	41
What is Deploy?	41
How does NetSupport DNA Deploy work?.....	42
What are the requirements?.....	42
Deploy scenarios	43
Domain environment	43
Workgroup environment.....	45
Common Errors.....	47
Contacting NetSupport	52

INSTALLATION

System Requirements

DNA Server

Minimum hardware: Single – Dual Core 2.00 GHz CPU 8 Gb RAM or higher. *

Free space required: 20 Gb (dependant on number of Agents supported).

Windows Server 2008 R2 or above (best practice).

Windows 7, Windows 8.1 and Windows 10.

Databases supported: SQL Server 2008 or later. If no version of SQL exists on the target system, when installing the DNA Server you will be prompted to either install SQL (SQL 2012 Express is included in the NetSupport DNA setup file), or to specify the address of an existing SQL Server

* Refer to our website www.netsupportsoftware.com/support for recommendations based on installed Agent base.

Optional Server modules (SNMP Discovery, Remote Gateways)

Windows 7 or higher.

Windows Server 2008 or higher.

NetSupport DNA Cloud Server

Windows 10.

Windows Server 2008 R2 and above.

NetSupport DNA Management Console

Free space required: 392 MB

Windows 7 or higher.

Windows Server 2008 R2 or higher.

NetSupport DNA Mobile Console apps

Android 4.03 or higher.

iOS 9.3 or higher.

NetSupport DNA Agent (client)

Free space required: 105 MB

Windows Vista or higher.

Windows Server 2008 or higher.

Mac OS X 10.8 or higher.

iOS 9.3 or higher.

Android

5.01 or higher.

Chrome OS.

Note: Terminal Server environments are only supported for the following components: Application Metering, Acceptable Use Policies, User Details, Print Monitoring, Internet Metering and eSafety.

Inventory only Agent

Windows XP SP3.

Windows Mobile 8 or later.

Planning an Installation

Before commencing an installation, consider which components are required. NetSupport DNA consists of eight main components:

1. NetSupport DNA Server
2. NetSupport DNA Console
3. NetSupport DNA SNMP Server
4. NetSupport DNA Web Server
5. NetSupport DNA Agent
6. NetSupport DNA Application Packager
7. NetSupport DNA Server Gateway
8. NetSupport DNA Agent Gateway

NetSupport DNA Server

The machine on which the server software is installed and the database is stored is called the NetSupport DNA Server.

An additional SQL Server needs to be installed to enable the NetSupport DNA Server to operate its database. The SQL Server works with the NetSupport DNA Server by effectively storing and retrieving the data that the DNA database collects, as required.

NetSupport DNA comes with an SQL Server available, which can be automatically installed. Alternatively, you can use an existing SQL Server, by entering the server's login details.

The SQL Server may run either on the same computer as the NetSupport DNA Server or on another networked computer.

Note: For further information, see SQL Server Installation.

NetSupport DNA SNMP Server

The SNMP Server is the component that allows you to monitor and configure SNMP-enabled Devices, such as printers and access points. The SNMP Server will need to have network access direct to the SNMP Devices. You will need to enter the DNS name or IP address of your NetSupport DNA Server.

Note: You can use the Gateway to communicate with the Devices.

NetSupport DNA Web Server

The Web Server is installed on a Windows machine. This allows the NetSupport DNA mobile app to connect to NetSupport DNA. For more information about the mobile app, [click here](#).

NetSupport DNA Console

The Console is the main interface for executing commands and is generally installed on an administrator's machine. An administrator executes a command and the gathered data is extracted from the NetSupport DNA database which resides on the server. Console users are provided with administrator rights. The installation prompts for an initial Console user logon to be created, but additional Console users can be added depending on your requirements.

Notes:

- The Console can be installed on multiple machines.
 - A cloud-based Console is available in the Education Edition of NetSupport DNA, enabling Console Operators to view data away from the main DNA Console in a browser.
-

NetSupport DNA Agent (Client)

The machine on which the Agent software is installed is called the NetSupport DNA Agent. The Agent is the end-user machine where data is collected from.

NetSupport DNA Local (Server) Gateway

The NetSupport DNA Gateway provides a means of connecting remote Agents to the NetSupport DNA Server. The Local Gateway communicates with the central NetSupport DNA Server. The Local Gateway must be installed separately from other NetSupport DNA components.

Note: If a DNA Server Gateway is installed on the same machine as a NetSupport Connectivity Server (NCS), remote control functionality over the DNA Gateway will not be available. (Applies to Education installations only).

NetSupport DNA Remote (Agent) Gateway

The Remote Gateway acts as a proxy server for the remote NetSupport DNA Agents, allowing them to communicate with the NetSupport DNA Server. The Remote Gateway can only be installed with the NetSupport DNA Agent.

Notes:

- There can be multiple Remote Gateways (one installed at each remote site) but only one Local (central) Gateway.
 - The NetSupport DNA Console must be on the same network as the NetSupport DNA Server to be able to pick up Gateway Agents.
-

NetSupport DNA Application Packager

The NetSupport DNA Application Packager complements the Software Distribution feature and allows users to record and play back "low complexity" product installers.

Note: It is recommended that NetSupport DNA Servers, Agent Gateway and Server Gateway components are installed on machines that have a resolvable DNS name and that DNS names are used throughout the configuration of Agents and consoles. If this is not possible, it is highly recommended that fixed IP addresses are assigned to any machine running the NetSupport DNA Server, Gateway Agent or Gateway Server components.

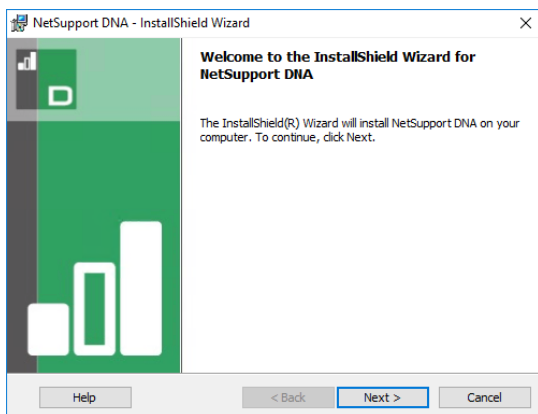
Starting the Installation

Download your copy of NetSupport DNA from www.netsupportdna.com/downloads.asp

Complete the download form and click **Download Now**.

Click the appropriate language from the menu and select the option to install NetSupport DNA.

The NetSupport DNA installation will start displaying a Welcome screen.



Click **Next** to continue. The DNA Licence Agreement will appear.

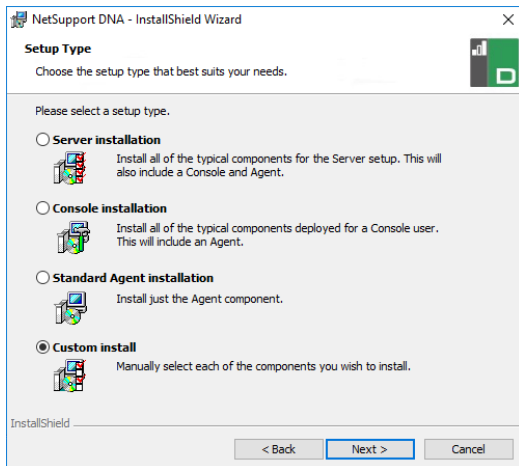
NetSupport Licence Agreement

The NetSupport Licence Agreement will be displayed. Please read the Licence Agreement carefully and select 'I accept the terms of the Licence Agreement' and click **Next** to continue.

If you reject the Licence Agreement, ('I do not accept the terms of the Licence Agreement') click **Cancel**. NetSupport DNA will not be installed and you will be directed to exit from the install program.

Select Setup Type

Choose the setup type to install on the workstation.



Server installation

Installs the NetSupport DNA Server, Console and Agent components.

Console installation

Installs the DNA Console and Agent components.

Standard Agent (Client) installation

Installs just the Agent component.

Custom installation

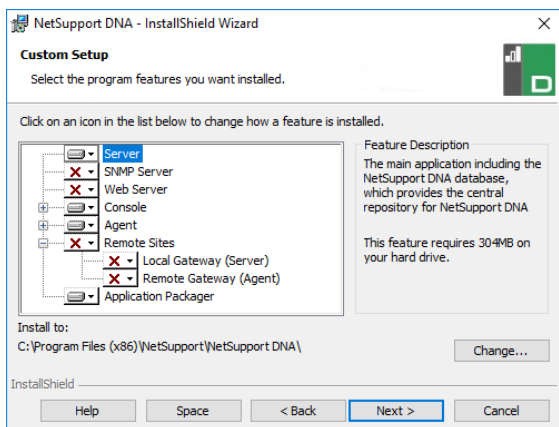
Allows you to pick and choose which components to install on the workstation.

Click **Next** to continue.

Custom Setup

Decide which NetSupport DNA components to install.

Note: This screen will only appear if you selected **Custom Install** in the Select Setup Type dialog.



Server

The machine on which the server software is installed and the database is stored is called the NetSupport DNA Server.

An available SQL-based Server is required on which to install the NetSupport DNA database. This server provides all of the functionality of NetSupport DNA. It contains the repositories where all the collected data resides.

SNMP Server

The SNMP Server allows you to monitor and configure SNMP-enabled devices.

Note: If performing a SNMP Server-only install, you will need to enter the location of the NetSupport DNA Server or Remote Gateway.

Web Server

The Web Server is installed on a Windows machine. This allows the NetSupport DNA mobile app to connect to NetSupport DNA.

An available SQL-based Server containing the NetSupport DNA database is required.

Console

The Console is the main interface for executing commands and is generally installed on an administrator's machine. An administrator executes a command and the gathered data is extracted from the NetSupport DNA database which resides on the server.

If performing a Console-only install, you will need to enter the location of the server that will be used to connect to Agents.

Agent (Client)

The Agent component should be installed on end-user machines across your network. The server polls Agent machines at regular intervals, gathering and holding system information in the NetSupport DNA database.

If performing an Agent-only install, you will need to enter the location of the server that will be used to connect to Agents.

Note: NetSupport DNA provides a Discovery and Deploy tool, which is a convenient facility that remotely deploys NetSupport DNA Agents to Windows PCs.

Internet Restrictions

Enables you to use the internet blocking facility, by default this is included when installing the Agent component.

Remote Sites

NetSupport DNA Local (Server) Gateway

The NetSupport DNA Gateway provides a means of connecting remote Agents to the NetSupport DNA Server. The Local Gateway communicates with the central NetSupport DNA Server. The Local Gateway must be installed separately from other NetSupport DNA components.

Note: If a DNA Server Gateway is installed on the same machine as a NetSupport Connectivity Server (NCS), remote control functionality over the DNA Gateway will not be available. (Applies to Education installations only).

NetSupport DNA Remote (Agent) Gateway

The Remote Gateway acts as a proxy server for the remote NetSupport DNA Agents, allowing them to communicate with the NetSupport DNA Server. The Remote Gateway can only be installed with the NetSupport DNA Agent.

Notes:

- There can be multiple Remote Gateways (one installed at each remote site) but only one Local (central) Gateway.
 - The NetSupport DNA Console must be on the same network as the NetSupport DNA Server to be able to pick up Gateway Agents.
-

Application Packager

The NetSupport DNA Application Packager complements the Software Distribution feature and is a utility that can be used to record and play back “low complexity” product installers.

By default, NetSupport DNA will be installed in the folder C:\Program Files\NetSupport\NetSupport DNA.

Select **Next** to continue.

SQL Server Installation

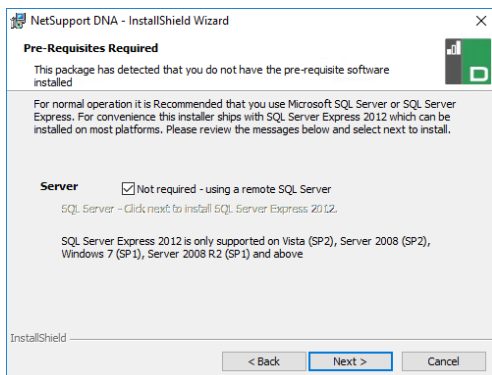
The SQL Server that you plan to use for the NetSupport DNA database can be installed on either the same computer as the NetSupport DNA Server, or a remote computer.

For supported operating systems, the NetSupport DNA installer can, if required, install and configure Microsoft SQL Server 2012 as part of the installation process.

Note: If you are using a remote SQL Server, please [click here](#) for further information on how to configure Microsoft SQL Server Express for use with NetSupport DNA.

Select **Next** to configure a Microsoft SQL Server.

Note: If you choose to install the SQL Server Express 2012 within NetSupport DNA, you will be directed to the Console User Setup screen.

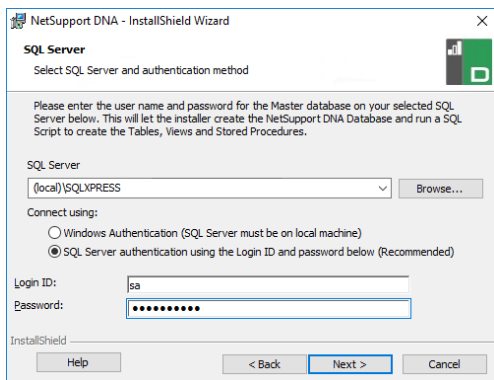


Setting up the Server

Select the SQL Server to install to from the drop-down list or click **Browse** to see a full list of SQL Servers.

Choose the appropriate verification method: SQL or Windows. If SQL, enter the user name and password of your master database.

Note: This dialog will only appear if the server feature is being installed and you are using a remote SQL Server.



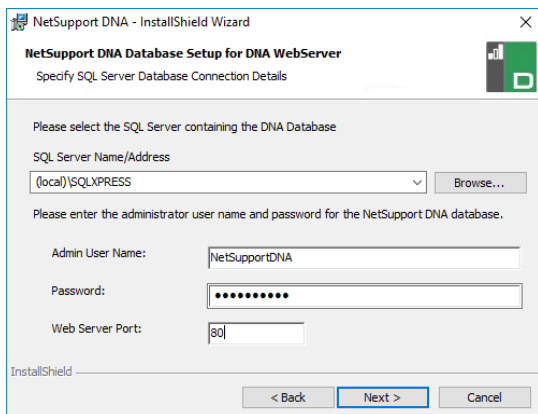
Click **Next**.

Web Server Database setup

The NetSupport DNA Web Server requires the address of the SQL Server that contains the NetSupport DNA Database. You will also need to provide the user name and password that the NetSupport DNA Server uses to connect to the database.

You can also configure the port the Web Server listens for connections on. By default, this is port 80. If you change the port number for the Web Server, you need to ensure that this is added to the end of the Server address used when logging onto the Mobile Console.

Note: This screen will only appear if you are installing the Web Server.



NetSupport DNA - InstallShield Wizard

NetSupport DNA Database Setup for DNA WebServer

Specify SQL Server Database Connection Details

Please select the SQL Server containing the DNA Database

SQL Server Name/Address

Please enter the administrator user name and password for the NetSupport DNA database.

Admin User Name:

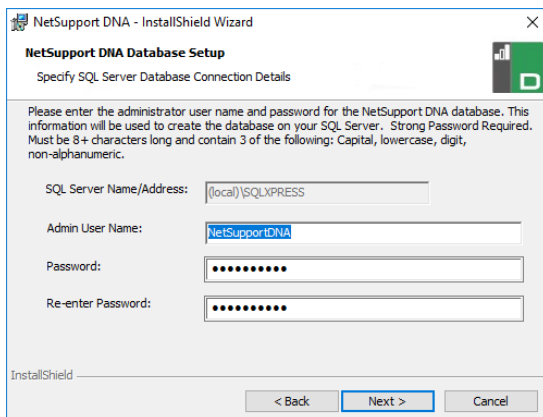
Password:

Web Server Port:

InstallShield

Note: If you do not know the user name or password, run the NetSupport DNA Database wizard on the machine running the NetSupport DNA Server. You can change the user name and password and enter the new details into the installer dialog. You will need to have the user name and password for the administrator of the SQL Server to make this change.

Enter the name and password to be used for the NetSupport DNA database and click **Next**.



NetSupport DNA - InstallShield Wizard

NetSupport DNA Database Setup

Specify SQL Server Database Connection Details

Please enter the administrator user name and password for the NetSupport DNA database. This information will be used to create the database on your SQL Server. Strong Password Required. Must be 8+ characters long and contain 3 of the following: Capital, lowercase, digit, non-alphanumeric.

SQL Server Name/Address:

Admin User Name:

Password:

Re-enter Password:

InstallShield

Enter the user name and password to be used to access the NetSupport DNA Console once installed. Additional Console Operator logins can be created after installation.

NetSupport DNA - InstallShield Wizard

NetSupport DNA Console User Setup

Specify NetSupport DNA Console User Login Details

Please enter the administrator user name and password for the NetSupport DNA Console. This information is required so that you can configure the NetSupport DNA system and view the reports.

Admin User Name:

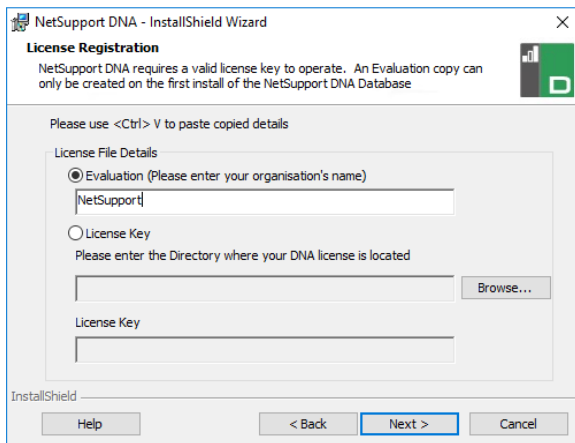
Password:

Re-enter Password:

InstallShield

< Back Next > Cancel

Select **Evaluation** and enter your organisation's name or enter the licence details you have been provided with. You will need to enter the directory where you have saved the NetSupport DNA licence file and enter the licence key number. The licence number is case sensitive. The NetSupport DNA standard evaluation licence runs for a period of 30 days and allows for a maximum of 50 users.



Note: If you are upgrading an existing installation, you will only have the option to enter the licence key details. If you have previously been using an evaluation licence and wish to continue with the evaluation, you will need to manually uninstall the software before installing the updated version. Before continuing with the upgrade, we recommend that you create a backup of your database. Please refer to our website, www.netsupportsoftware.com/support, for full instructions.

Click **Next**.

Inter Component Communications

If you are installing the Console, Agent, SNMP Server or Local Gateway, you will be required to enter the DNS name or IP address for the NetSupport DNA Server.

Note: If the DNS name or the IP address cannot be found, you will not be able to continue with the installation.

If you are installing the Remote Gateway, you will need to enter the DNS name or IP address for the Local Gateway. You will also have the option to enter this when installing the NetSupport DNA Server.

Click **Next** to continue.

Select Enterprise Type

NetSupport DNA is available in two versions: corporate and education. Each version features a wealth of components tailored to its intended sector. Businesses and educational institutions alike will benefit from the flexibility the product offers – whether they are focusing the management of multiple users across an enterprise (software distribution, alerting and licence management) or ensuring campus-wide cost savings (print monitoring, energy monitoring and power management).

Select your enterprise type and click **Next**.

Sufficient information has been provided to commence the installation. If you need to review any of the settings, click **Back**; to start the installation, click **Install**. To quit the installation, click **Cancel**.

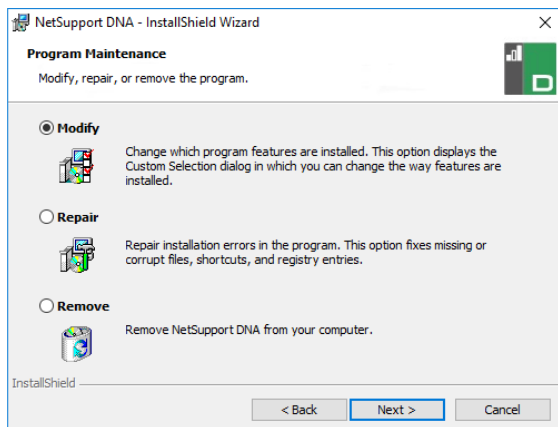
The final screen confirms that the installation has been successful. If you have installed the NetSupport DNA Console, you will have the option to launch this.

Notes:

- When installing the Console and/or Server, it is recommended that you use the latest SQL Native Client. This can be downloaded from www.microsoft.com/en-us/download/details.aspx?id=50402.
 - After installation, a convenient utility can be run should you need to update your database, console or upgrade from an evaluation licence to a full licence. **See: Using the DNA Database Wizard.**
-

Existing Installation

This screen will appear if a copy of NetSupport DNA has already been installed on a workstation.



Modify

Enables you to change the NetSupport DNA components that are currently installed.

Repair

Reinstalls all the program features installed by the previous setup and repairs any installation errors in the program.

Remove

This option removes all installed features.

Select the required option and click **Next**.

Installing via Active Directory

NetSupport DNA allows you to install Agents using Active Directory Group Policy Software Deployment.

In order to install using Active Directory, you will need to locate the DNA.ini and Agent.msi file.

The DNA.ini is stored in the following folder on the NetSupport DNA Console machine:

32bit C:\Program Files\NetSupport\NetSupport DNA\Console
64bit C:\Program Files (x86)\NetSupport\NetSupport DNA\Console

The Agent.msi is available from the downloads area:

www.netsupportdna.com/downloads.asp

For full instructions on how to configure an Active Directory deployment, please visit our [Knowledge Base](#) and refer to technical document **Installing the NetSupport DNA Agent via Active Directory Group Policy software deployment.**

Advanced Option - Command Line Installation

NetSupport DNA allows administrators to install the Console, Agent, Application Packager and the Remote and Local Gateways from the command line using the MSI installers supplied. In addition, the Console, Agent and Application Package can be installed via Active Directory.

To carry out installation from the command line

1. Place the appropriate MSI installation file into the same folder as the configuration file on the target machine, or an accessible share.
2. Edit the INI file to set the appropriate settings for your installation, e.g. ServerAddress=, InstallDir=
3. On the target machine, execute the installation according to the following examples:

To install the NetSupport DNA Agent

```
msiexec.exe /qb /i "NetSupport DNA 485 client.msi"
```

To control which local users NetSupport DNA Console is installed for

```
msiexec.exe /qb /i "NetSupport DNA 485 console.msi"  
ALLUSERS=2
```

ALLUSERS=""	Installs the package for the current user only.
ALLUSERS=1	Installs the package for all local users.
ALLUSERS=2	Checks if the current user has administrative privileges. If so, the package will install for all users, otherwise it will only install for the current user. Not Supported for NetSupport DNA MSI installers.

There is a sample DNA.INI file that is created in your Console installation directory. This allows you to customise various parameters for the MSI installation.

Agent and Console options

[All]

- InstallDir= Leave blank for default installation directory. This also applies to Application Packager installs.
- ServerAddress= IP address or, preferably, DNS name of the NetSupport DNA Server.

Agent only options

[Client]

- EnableLSP= 1 = install the NetSupport LSP, 0 = do not install
- RemoveUninstallOption= 1 = does not appear in Add/Remove programs

Installation via Active Directory (AD)

There are no special considerations for installation of NetSupport DNA using Active Directory.

1. Place the NetSupport DNA MSI and INI file in a share on your AD server which is accessible to your computers or users.
2. Create or edit a Group Policy object (GPO) that affects the users or computers you wish to install NetSupport DNA for.
3. Create a new AD Software Installation Package under either Computer Configuration or User Configuration as appropriate.
4. Assign or publish the package.

For further information on Active Directory software installation, please refer to Microsoft Help resources:

<http://support.microsoft.com/kb/816102>

Upgrading from Existing NetSupport DNA Versions

If you are upgrading to the latest NetSupport DNA version from a previous version of NetSupport DNA (NetSupport DNA 2.70 and above), you can install the new version from the NetSupport DNA installer.

Note: If you are upgrading from a NetSupport DNA version before NetSupport DNA 2.70 please refer to our website: www.netsupportsoftware.com/support for instructions.

1. Run the new NetSupport DNA setup.exe on the PC where the NetSupport DNA Server is located.
2. Follow the on-screen instructions. The previous NetSupport DNA version will be removed and the latest version of NetSupport DNA will be installed. All previous NetSupport DNA settings will be kept.
3. Consoles and Agents will be updated to the new version the next time they connect to the Server.

Installing NetSupport DNA Agent on Mac Systems

A NetSupport DNA Agent can be installed on Mac systems, allowing you to effectively manage your Mac machines.

Note: The NetSupport DNA Mac Agent supports Mac OS X 10.8 and above.

1. The NetSupport DNA Agent is provided as a standard Mac OS X .DMG file. This is available from the downloads area on our [website](#).
2. To mount the drive image, copy to the hard drive and double click. The mounted drive image will be available on the desktop.
3. The installer will automatically run - follow the on-screen instructions.

Features supported on Mac Agents:

- Gather a full hardware and software inventory from the Agent machine.
- Automatically notify operators of any hardware and software alerts.
- A detailed summary of all internet activity.
- A summary of all applications used.
- Real-time monitoring of Agent machines in icon, details or thumbnail view.
- A single time-based summary of all activity presented in a chronological view.
- Remote control Agent machines, allowing Operators to remotely troubleshoot and perform administrative tasks.
- Agents can report a concern.*
- Monitor keywords and phrases.*

* These features are only available in the Education Edition of NetSupport DNA.

NetSupport Browser for iOS

NetSupport DNA provides a mobile Browser app for iOS tablets and smartphones that supports NetSupport DNA's core desktop management capabilities. When launched, it will interrogate the iOS device to gather key system inventory details and monitor online activity. The data collected is dynamically sent to your local NetSupport DNA Server and is then available for reporting within the NetSupport DNA Console.

The app also supports NetSupport School's core classroom management tools, enabling real-time student interaction and support during a lesson. For more information on NetSupport School, [click here](#).

The NetSupport Browser app can be downloaded from the [Apple App Store](#) on iOS 9.3 or higher devices.

For information on how to centrally configure and deploy the NetSupport DNA Browser, please [click here](#).

Standard browser navigation features - including bookmarks, add tabs (with the option to set a default Home Page), internet history, plus the option to change the default search engine - are also included.

Note: By default, the port that devices use is 1743. This can be changed in the NetSupport DNA Database wizard.

Supported features:

- **Real-time Monitoring** - An Operator or teacher via the Console can view a real-time summary of all devices. Selected devices can be viewed either in a detailed list view or via real-time thumbnails of each device screen.
- **Internet Metering** - A summary of internet activity via the app is recorded, including start and finish times for each URL visited and the active time spent on a page.
- **Internet Restrictions** - Internet usage can be fully managed with the enforcement of approved and restricted website lists.

- **Safeguarding Keyword Monitoring** (Education Edition) - This tool helps schools protect students from being exposed to inappropriate online content. It alerts staff when students type or search for any terms that match with those in the DNA keyword database, providing safeguarding and internet safety indicators for self-harm, bullying, radicalisation, child sexual exploitation - and much more.
- **Safeguarding Resources** (Education Edition) - The Safeguarding Resources icon, displayed on the Browser app's toolbar, gives students instant access to a list of appropriate online support resources.
- **Report a Concern** (Education Edition) - Students can report concerns directly and discreetly to nominated school staff.
- **Hardware Inventory** - When the DNA Browser is launched on a device, an inventory is dynamically sent to the NetSupport DNA Server.
- **Enterprise Alerting** - Real-time alerts enable Console Operators to immediately identify any user who has attempted to access a restricted website or triggered a safeguarding keyword.
- **Activity** - Console Operators can see a chronological view of device activity for a selected time period.
- **Collect roaming data** - If devices are used away from the network, the app can be configured to record activity in the background with the stored data collected by the central DNA Server once re-connected.

NetSupport DNA Browser for Android

NetSupport DNA provides a mobile Browser app for Android tablets and smartphones, allowing you to gather key system inventory details and monitor online activity. The data collected is dynamically sent to your local NetSupport DNA Server and is then available for reporting within the NetSupport DNA Management Console.

The NetSupport DNA Browser for Android app can be downloaded from the [Google Play](#) store on Android 5.01 and above devices.

Standard browser navigation features - including bookmarks, add tabs (with the option to set a default Home Page), internet history, plus the option to change the default search engine - are also included.

Note: It is recommended that a suitable third-party MDM solution is used to enable central deployment and lockdown of the app and its configuration.

Supported features:

- **Real-time Monitoring** - An Operator can view a real-time summary of all devices. Selected devices can be viewed either in a detailed list view or via real-time thumbnails of each device screen.
- **Internet Metering** - A summary of internet activity via the app is recorded, including start and finish times for each URL visited and the active time spent on a page.
- **Internet Restrictions** - Internet usage can be fully managed with the enforcement of approved and restricted website lists.
- **Safeguarding Keyword Monitoring** (Education Edition)
 - This tool helps schools protect students from being exposed to inappropriate online content. It alerts staff when students type or search for any terms that match with those in the DNA keyword database, providing safeguarding and internet safety indicators for self-harm, bullying, radicalisation, Child Sexual Exploitation - and much more.

- **Safeguarding Report a Concern** (Education Edition) - Students can report concerns directly and discreetly to nominated school staff.
- **Safeguarding Resources** (Education Edition) - The Safeguarding Resources icon, displayed on the Browser apps toolbar, gives students instant access to a list of appropriate online support resources.
- **Hardware Inventory** - When the NetSupport DNA Browser is launched on a device, a full inventory of the device is dynamically sent to the NetSupport DNA Server for subsequent viewing in the Console.
- **Software Inventory** - When the NetSupport DNA Browser is launched on a device, a full inventory of the installed programs on the device is dynamically sent to the NetSupport DNA Server for subsequent viewing in the Console.
- **Enterprise Alerting** - Real-time alerts enable Console Operators to immediately identify any user who has attempted to access a restricted website or triggered a Safeguarding keyword.
- **Activity** - Console Operators can see a chronological view of device activity for a selected time period, websites visited and triggered Safeguarding phrases.
- **Chat** - Console Operators can launch a two-way chat session with any number of selected users.
- **Message** - Console Operators can broadcast a one-way notification to selected users.

NetSupport DNA Chrome Agent

The NetSupport DNA Agent extension for Chrome OS supports NetSupport DNA's core desktop management capabilities. When launched within a Chrome Browser, it will interrogate the device to gather key system inventory details and monitor online activity. The data collected is dynamically sent to your local NetSupport DNA Server and is then available for reporting within the NetSupport DNA Management Console.

The NetSupport DNA Chrome Agent extension can be downloaded from the [Google Play](#) store.

For information on how to centrally configure and deploy the NetSupport DNA Agent Extension for Google Chrome, please [click here](#).

Note: By default, the port that devices use is 1743. This can be changed in the NetSupport DNA Database wizard.

Supported features:

- Gather a full hardware inventory from the Agent machine.
- Real-time monitoring of Agent machines in icon, details or thumbnail view.
- Agents can report a concern.*
- Monitor keywords and phrases.*
- A detailed view of all internet activity.
- Console Operators can see a chronological view of device activity for a selected time period.
- Real-time alerts enable Console Operators to immediately identify any user who has attempted to access a restricted website or triggered a Safeguarding keyword.

* Only available in the Education Edition of NetSupport DNA.

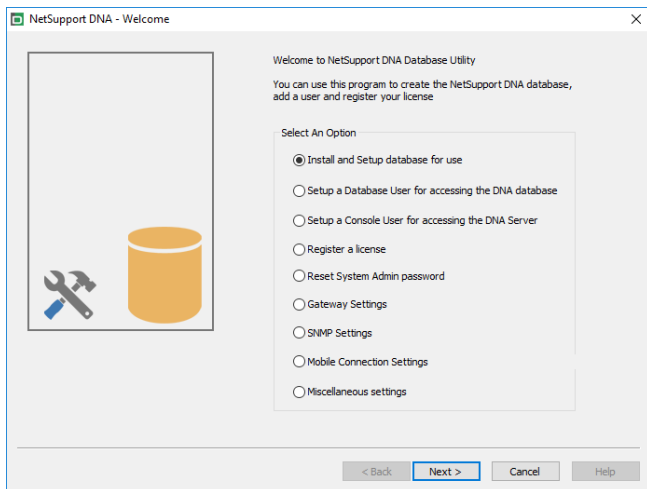
USING THE NETSUPPORT DNA DATABASE WIZARD

The NetSupport DNA Database wizard is a convenient utility that can be run after installation should you need to change any of your NetSupport DNA settings.

The wizard can be used to create the NetSupport DNA database; add database users; add console users; update licence details; reset the system admin password; add NetSupport DNA Gateway settings; set SNMP settings; set mobile connection settings; and set miscellaneous settings such as SQL Server address, timeout for queries and force AD authentication.

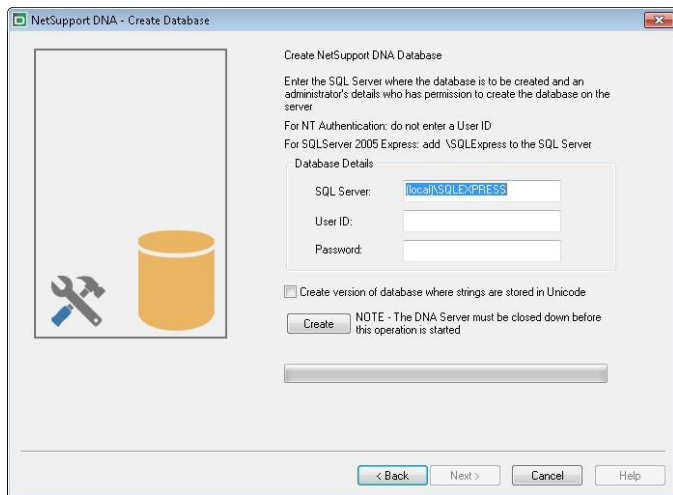
During installation, the NetSupport DNA Database wizard is copied to the Server folder of the NetSupport DNA program directory. The default location is c:\Program Files\NetSupport\NetSupport DNA\Server\DNADBWizard.

Note: For the changes to take effect, the Server service will need restarting.



Install and set up database for use

Enter the address/name of the SQL Server where the NetSupport DNA Database is to be created and the administrator logon details.



NetSupport DNA - Create Database

Create NetSupport DNA Database

Enter the SQL Server where the database is to be created and an administrator's details who has permission to create the database on the server

For NT Authentication: do not enter a User ID

For SQLServer 2005 Express: add \SQLExpress to the SQL Server

Database Details

SQL Server: (local)\SQLExpress

User ID:

Password:

Create version of database where strings are stored in Unicode

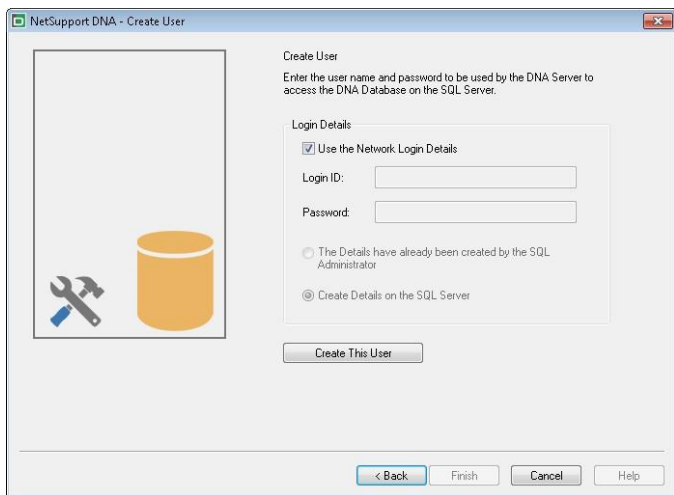
Create NOTE - The DNA Server must be closed down before this operation is started

< Back Next > Cancel Help

Set up NetSupport DNA user for accessing the database

This dialog enables you to create/change the user name and password used to access the NetSupport DNA Database on the Server. If using the existing access details, check that the SQL administrator has already created the details.

Note: It is preferable not to use an existing administrator login as this could compromise the security of other databases on the SQL server.



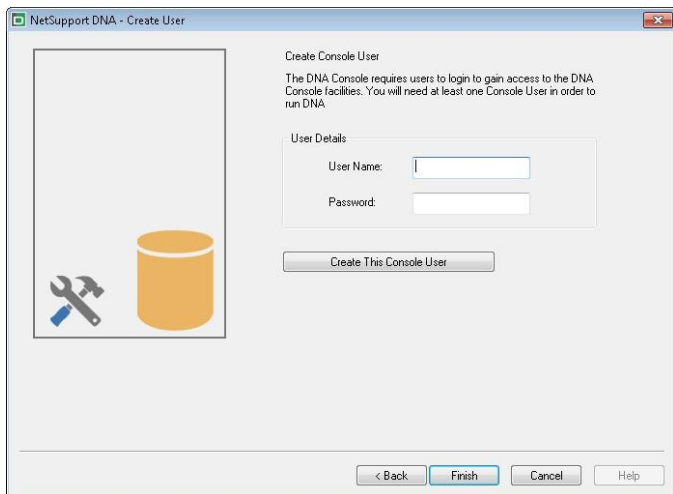
The screenshot shows a Windows-style dialog box titled "NetSupport DNA - Create User". On the left is a large empty rectangular area with a small icon of a wrench and a hammer next to a yellow cylinder. On the right, the text "Create User" is followed by the instruction: "Enter the user name and password to be used by the DNA Server to access the DNA Database on the SQL Server." Below this is a "Login Details" section with three radio button options: "Use the Network Login Details" (checked), "The Details have already been created by the SQL Administrator", and "Create Details on the SQL Server". The first option includes "Login ID:" and "Password:" text labels and corresponding input fields. A "Create This User" button is positioned below the radio buttons. At the bottom of the dialog are four buttons: "< Back", "Finish", "Cancel", and "Help".

Set up admin users to access the NetSupport DNA Server

If there was a problem creating the Console user during installation, this option within the Database wizard can be used to create new Console users. Console users are provided with admin rights.

Notes:

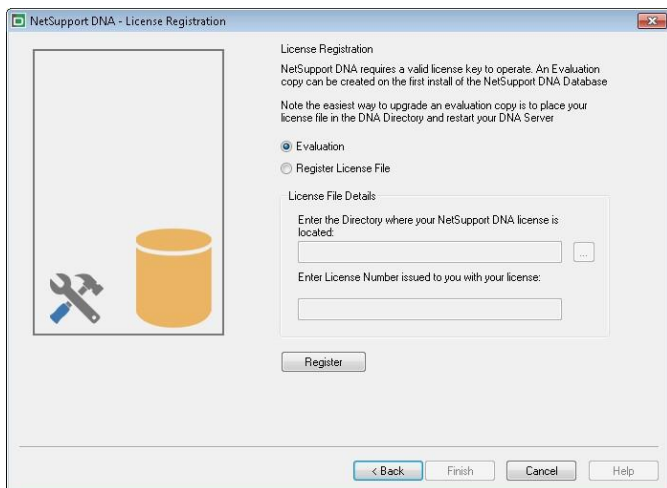
- Admin user rights are required for this operation. You will be prompted to enter the appropriate user name and password when you click **Create User**.
 - Additional Console users can also be created via the Console program itself.
-



Register a Licence

The Database wizard enables you to update your NetSupport DNA licence details, for example, when switching from an evaluation licence to a full sale copy.

Note: Admin user rights are required for this operation. You will be prompted to enter the appropriate user name and password when you click **Register**.



To register a full licence, copy the licence file you have been supplied with to an appropriate folder and enter the location into the Registration dialog.

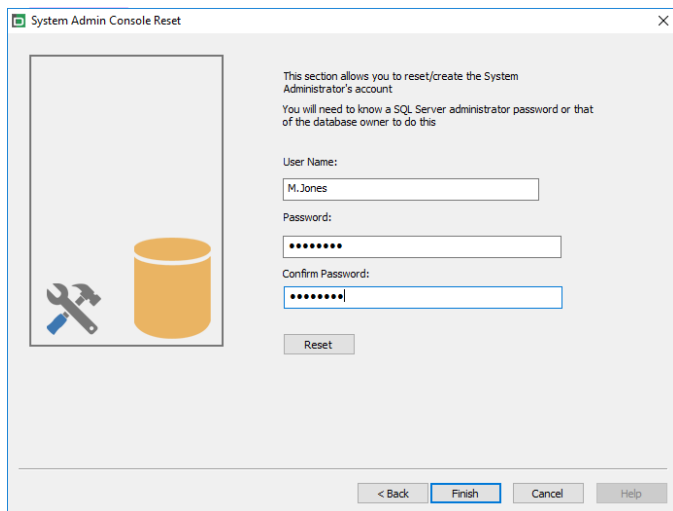
Enter your licence number - the details are case sensitive. Click **Register** to update the licence.

A key element in the day-to-day operation of NetSupport DNA is the frequency that the Server polls Agent machines to gather data for each of the main components (evaluation default = 10 minutes). However, if you have a large Agent base, the number and frequency of connections can place an unwanted overhead on performance.

To counter this, when activating a 'Sale' copy, NetSupport DNA will determine whether a more appropriate connection interval is required, based on the number of user licences being registered. Post-installation, a Console Operator can manually adjust the interval for each component if required.

Reset System Admin Password

This option allows you to reset the password for the system administrator. To reset this, you will need to know the admin password for the SQL Server.



System Admin Console Reset

This section allows you to reset/create the System Administrator's account.
You will need to know a SQL Server administrator password or that of the database owner to do this

User Name:

Password:

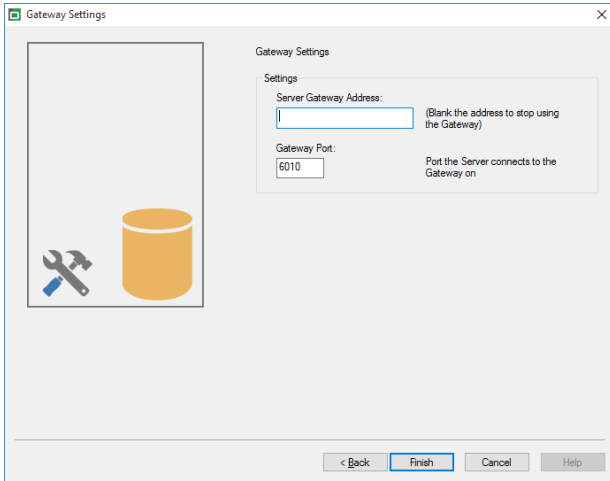
Confirm Password:

< Back Cancel Help

Enter the system admin user name and new password and click **Reset**. You will then be prompted to enter the details for the SQL Server, user ID (if required) and SQL Server admin password, click **OK**. The password for the system admin will be reset.

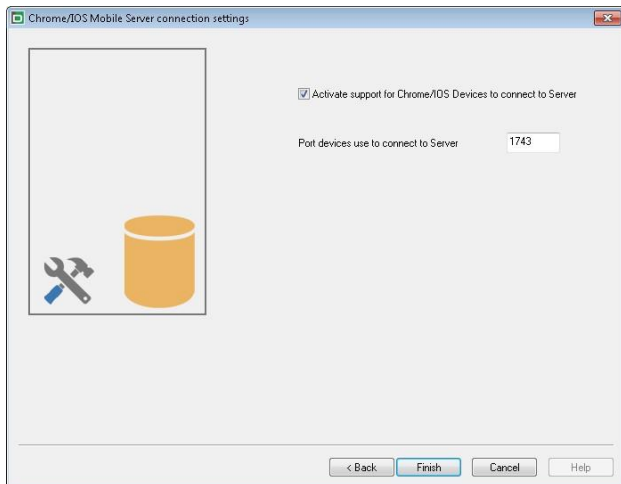
Gateway Settings

To start using the NetSupport DNA Gateway, enter the IP address for the Server Gateway. By default, the Gateway port is 6010. Alternatively, to stop using the NetSupport DNA Gateway, remove the Gateway address.



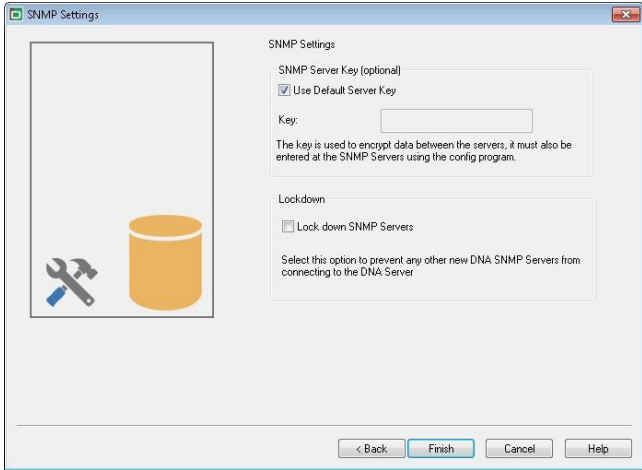
Mobile Connection Settings

By default, NetSupport DNA allows Chrome and iOS devices to connect to the Server, but this can be disabled from here. The port that devices use to connect to the Server is 1743.



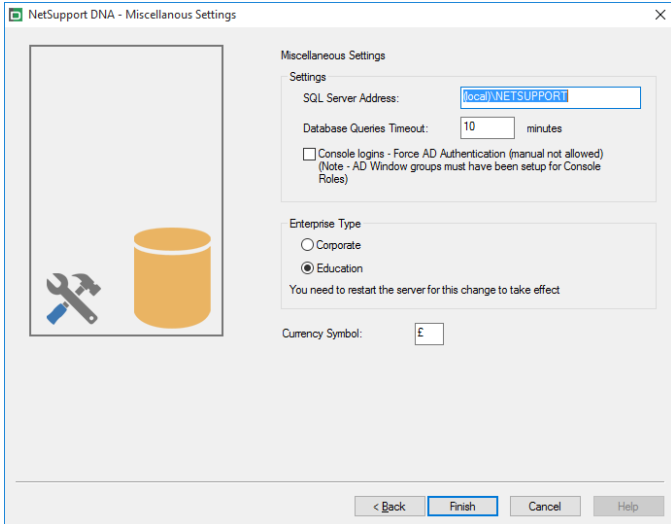
SNMP Settings

This dialog allows you to set an SNMP server key. This is used to encrypt data between servers and must also be set at the SNMP server. You can also lock down the SNMP servers, preventing any other SNMP servers from connecting to the DNA server.



Miscellaneous settings

From this dialog, you can change various NetSupport DNA settings such as the IP address of the SQL Server, database queries timeout, force AD authentication, enter NetSupport DNA Gateway settings, select the enterprise type and select the currency.



By default, the database queries timeout is set to 300 seconds; you can amend this by entering the required value.

If you have assigned an Active Directory Windows group to a Console role, you can force AD authentication. The user will not be able to access the NetSupport DNA Console unless they are authenticated in Active Directory.

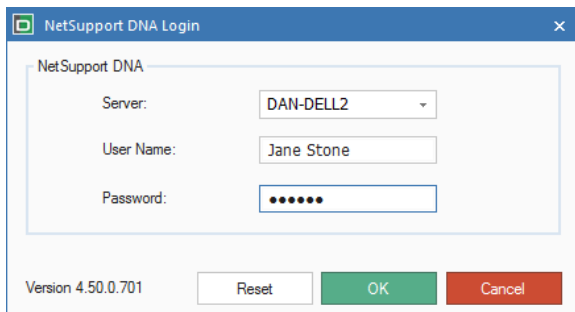
NetSupport DNA is available in two versions: corporate and education. Select the required enterprise type.

NetSupport DNA sets the currency from the system locale of the machine the DNA Server is located on. To change the currency used in the database, enter the required currency symbol here.

STARTING THE NETSUPPORT DNA CONSOLE

At a machine with the NetSupport DNA Console installed select {Start}{Programs}{NetSupport DNA}{NetSupport DNA Console}.

Enter the Console user name and password.



The screenshot shows a Windows-style dialog box titled "NetSupport DNA Login". Inside the dialog, there is a section titled "NetSupport DNA" containing three input fields: "Server:" with a dropdown menu showing "DAN-DELL2", "User Name:" with a text box containing "Jane Stone", and "Password:" with a text box containing six black dots. At the bottom of the dialog, there is a version number "Version 4.50.0.701" and three buttons: "Reset", "OK", and "Cancel".

For the latest product news and updates, select **Help** from the Console menu.

DEPLOYING NETSUPPORT DNA AGENTS

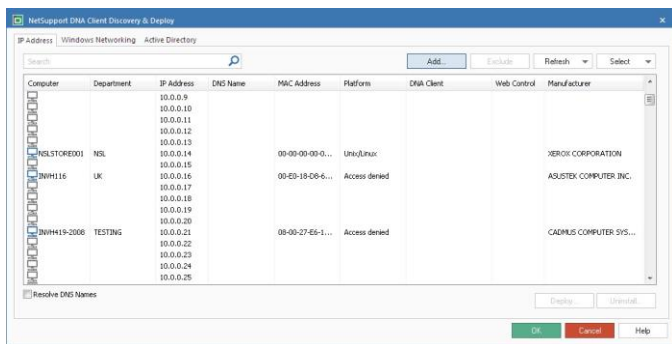
This section aims to cover details on the NetSupport DNA Agent Discovery and Deploy utility available within the NetSupport DNA Console, including how this works and the requirements to use the utility within different environments.

In addition, some useful troubleshooting tips for the NetSupport DNA Agent Discovery and Deploy utility are included.

What is Deploy?

The NetSupport DNA Agent Discovery and Deploy utility provides network administrators with the facility to install the NetSupport DNA Agent on multiple computers without the need to visit the machines individually.

The Discovery and Deploy tool can be accessed from the Tools tab in the NetSupport DNA Console.



Within the NetSupport DNA Agent Discovery and Deploy utility, you have the ability to deploy the NetSupport DNA Agent using an IP address range, the existing Windows network or Active Directory. All of these methods allow you to pick and choose which computers you want to deploy to.

The NetSupport DNA Agent Discovery and Deploy utility can be used to deploy the NetSupport DNA Agent to computers running the following operating systems:

- Windows XP
- Windows 2003
- Windows Vista
- Windows Server 2008\2008r2
- Windows 7
- Windows 8/8.1
- Windows Server 2012
- Windows 10

Note: Due to operating system limitations, the NetSupport DNA Discovery and Deploy utility does not work with Windows XP Home, Windows Vista Home Premium or Windows 7 Starter/Home edition.

How does NetSupport DNA Deploy work?

Once the Deploy options have been configured, the NetSupport DNA Agent Discovery and Deploy utility works by connecting to the target computer using File and Print Sharing.

This method requires access to the target computer's Admin\$ share and will need to connect as a user with local administrator access (user details may be requested).

Once authenticated, the NetSupport DNA Agent package files are copied to the following folder on the remote PC using the connection to the Admin\$ share:

C:\Windows\pcirdist.tmp\

Finally, once the files have been sent to the target PC, the Agent installer file is executed using the Remote Procedure Calls (RPC) Service.

What are the requirements?

In order to successfully deploy the NetSupport DNA Agent component to your target PCs, the following items are required:

- File and Print Sharing must be enabled on the target PC.

- The Sharing and Security for local accounts policy must be set to {Classic} on the target PC.
- The user account used to connect to the target PC must have local administrator permissions on the target PC.
- Network discovery must be enabled on Windows Vista/7 target PCs.
- UAC Remote Restrictions must be disabled for target PCs running Windows Vista and Windows 7 in workgroup environment.

Deploy scenarios

The NetSupport Agent Discovery and Deploy tool can be used to deploy to machines in both domain and workgroup environments.

See below for information on how to implement NetSupport DNA Discovery and Deploy in each of these environments:

Domain environment

When using the NetSupport DNA Discovery and Deploy utility within a domain environment, Windows Group Policy settings can be used to configure the target PCs with the required settings (detailed above) to permit the deployment of the NetSupport DNA Agent to these PCs.

Network Discovery

In order for domain PCs running Windows 7 and Vista to appear in the Windows Networking view of the NetSupport DNA Agent Discovery and Deploy tool, the Network Discovery setting will need to be enabled on the target PCs.

The Network Discovery setting can be enabled by applying the Windows Group Policy setting to the domain PCs:

1. Open the Group Policy Management Microsoft tool.
2. Either create a new Group Policy Object or select an existing Group Policy Object that will be applied to the required target PCs.
3. Select to edit your chosen Group Policy Object.
4. The Group Policy Management Editor will open.

5. Navigate to the following location:
Computer Configuration – Policies – Windows Settings – Security Settings – Windows Firewall with Advanced Security – Inbound Rules
6. From the Actions menu choose **New Rule**.
7. For the first Rule type, click the Pre-defined option and select {Network Discovery} from the drop down menu and click **Next**.
8. Select **Next** on the Pre-defined Rules step.
9. The Action step will then appear – select the **Allow the Connection** option.
10. Click **Finish**.

The next time the domain PCs are restarted or the Group Policy refreshes on the PCs, the Network Discovery option will be added to the Windows Firewall. This will allow the PCs to be seen within the Windows Network view of the NetSupport DNA Agent Discovery and Deploy tool.

File and Print Sharing

To allow the NetSupport DNA Agent Discovery and Deploy tool to connect to the target PC's Admin\$ share to transfer the NetSupport DNA Agent installer files, file and print sharing access will need to be enabled on the target PCs.

This setting can be enabled centrally by applying the below Windows Group Policy setting to the domain PCs:

1. Open the Group Policy Management Microsoft tool.
2. Either create a new Group Policy Object or select an existing Group Policy Object that will be applied to the required target PCs.
3. Select to edit your chosen Group Policy Object.
4. The Group Policy Management Editor will open.
5. Navigate to the following location:
Computer Configuration – Policies – Administrative Templates – Network – Network Connections – Windows firewall – Domain Profiles
6. Select the following Policy from the above location:

Windows Firewall: Allow inbound file and printer sharing exception.

7. Set the above Policy to **Enabled**.

The next time the domain PCs are restarted or the Group Policy refreshes on the PCs, it will be possible to access the Admin\$ share for these PCs.

Workgroup environment

When using the NetSupport DNA Discovery and Deploy utility in a workgroup environment, ensure that the target PCs have been correctly configured with the items highlighted in the "What are the requirements?" section above.

Within a workgroup environment these configurations will need to be made locally on the target PC:

Network Discovery

In order for PCs in a workgroup running Windows 7 and Vista to appear in the Windows Networking view of the NetSupport DNA Agent Discovery and Deploy tool, the Network Discovery setting will need to be enabled on each of the target PCs.

Windows 7 and Vista:

1. Log on with local administrator rights to the target PC.
2. Access the Control Panel.
3. Open the network and sharing Center.
4. Choose the **Advanced Sharing** settings.
5. Ensure that under your network profile the Network Discovery option is configured to:
{Turn on Network discovery}.
6. Save changes.

File and Print Sharing

In order to deploy the NetSupport DNA Agent to your PCs within a workgroup environment, you will need to ensure that file and print sharing is enabled on each of the target PCs.

Windows XP:

1. Right click on {My Network Places}{Properties}.

2. Right click on {Local Area Connection}.
3. Select {Properties}.
4. From the {General tab} select the {File and Print Sharing for Microsoft Network} option.
5. Click **OK**.

Windows 7 and Vista:

1. Click Start, then Control Panel.
2. Select Windows Firewall.
3. Choose the option **Allow a program or feature through Windows Firewall**.
4. Select the option to allow **File and Printer Sharing and the associated exception** (Private and Public). Click **OK** to save the changes.

Sharing and Security Model

In order to use the NetSupport DNA Discovery and Deploy utility to remotely access the PCs within a workgroup using an administrator account, the sharing and security local policy will need to be configured to Classic mode on each of the target PCs.

Windows XP Professional, Windows 7 and Vista:

1. In Administrative Tools select Local Security Policy.
2. Select {Security Settings}{Local Policies}{Security Options}.
3. Select {Network access: Sharing and security model for local accounts}.
4. Alter the setting for this policy to {Classic - local users authenticate as themselves}.

UAC Remote Restrictions

For Windows 7 or Vista machines within a workgroup environment, you may need to disable UAC remote restrictions on these target PCs following the steps below:

1. Click **Start**, click **Run**, type regedit and then press **Enter**.
2. Locate and then click the following registry subkey:

HKEY_LOCAL_MACHINE\SOFTWARE\Microsoft\Windows\CurrentVersion\Policies\System

3. If the LocalAccountTokenFilterPolicy registry entry does not exist, follow these steps:
 - a. On the Edit menu, select **New**, and then click **DWORD Value**.
 - b. Type LocalAccountTokenFilterPolicy, and then press **Enter**.
 - c. Right click LocalAccountTokenFilterPolicy, and then click **Modify**.
 - d. In the Value data box, type 1, and then click **OK**.
4. Exit the Registry Editor.

Common Errors

Symptom

The following error message may be displayed when attempting to deploy the NetSupport DNA Agent to a PC:

FAILED to get platform information (53)

- *If Windows 95/98/ME system verify File Sharing & Remote Administration is enabled.*
- *If Windows NT/2000/XP system verify File Sharing is enabled and Server service is running.*
- *If Windows XP system with SP2 you may need to amend your Windows Firewall configuration, please refer to our help file.*

Deployment FAILED!

Cause

The reason for the above message to appear is due to the Windows Firewall or third-party firewall application being enabled with none of the required exceptions configured.

Solution

Ensure that the firewall is configured with the exception to permit access for file and print sharing as detailed in the Deploy scenarios in the previous section.

Symptom

When attempting to deploy the NetSupport DNA Agent to a target PC, a prompt for a user name and password appears for the connection to the target PC.

Regardless of the user name and password entered, the Connect to Computer prompt appears with incorrect password or unknown user name for [MachineName] message.

Clicking **Cancel** displays {Deployment Cancelled!} message.

Cause

The reason for the above behaviour is due to the configuration of the following local policy being set to Guest Only:

“Network Access: Sharing and Security model for local accounts”

Solution

In order to resolve the behaviour, the setting for the local policy needs to be changed from Guest Only to Classic – Local Users authenticate as themselves. Full details on how to apply this setting can be found in the Deploy scenarios section of this document.

Symptom

When attempting to deploy the NetSupport DNA Agent to a target PC, a prompt for a user name and password appears for the connection to the target PC.

Clicking **OK** after entering the username and password displays:

- Deployment FAILED due to Conflicting Credentials!
Message

Cause

The reason for the above message is that the PC running the Agent Discovery and Deploy tool already has a connection to the target PC using a different set of credentials.

Windows is programmed to reject multiple connections from the same source if more than one set of credentials is supplied from that source.

Causes for this could be if you have mapped a drive to the target PC previously under a different set of credentials.

Solution

In order to resolve the issue, you will need to enter the user details already used to connect to the PC (these will require admin rights to the target PC) or, alternatively, you will need to disconnect any other connections to the target PC that are using the conflicting set of credentials.

Symptom

The target PC's machine name is not visible within the NetSupport DNA Agent Discovery and Deploy tool.

Cause

When using the Discovery and Deploy tool, the information collected may depend on the location of where the Discovery and Deploy tool is run in regards to where the target machines are located.

If the target machines are remote to the machine running the Discovery and Deploy tool, it may not be possible to resolve the IP address of the machine to a DNS machine name. However, even though it may not be able to resolve the host name, if the Discovery and Deploy tool can still connect to the target machine, it will be able to deploy the NetSupport DNA Agent to them.

Solution

The Discovery and Deploy tool uses three primary ways of retrieving the information from the target machines:

1. DNS - this uses the standard Windows method from the DNS Server.
2. DNA Agent status - only works if the NetSupport DNA Agent software is already installed on the machine.
3. NetBIOS test - this will only be available if a single segment network is in use.

Symptom

When attempting to deploy the NetSupport DNA Agent to a target PC, the following error message may appear:

Copying files...

FAILED to copy 'ClientDeploy\dna.ini' (2)

Deployment FAILED!

Cause

Due to the UAC restrictions in force on the machine running the Discovery and Deploy tool, the deploy process couldn't create the dna.ini (and runclientsetup.bat) files in the NetSupport\NetSupport DNA\Console\ClientDeploy folder.

Solution

In order to resolve the problem, on the PC running the Discovery and Deploy tool ensure that the logged on user has full access to the NetSupport\NetSupport DNA\Console\ClientDeploy folder.

Symptom

When attempting to deploy the NetSupport DNA Agent to a target PC, the following error message may appear:

Copying files...

- *FAILED to copy 'ClientDeploy\pcirisvr.exe' (1224)*

Deployment FAILED!

Cause

This message can appear if the Deploy install or uninstall option from the Discovery and Deploy window has previously been sent to the machine. Once the pcirisvr.exe PCI remote install service has been initiated, it is reported as locked/in use.

Solution

Under these circumstances it is not possible to perform another deploy to the machine without it first being re-booted.

Symptom

When attempting to deploy the NetSupport DNA Agent to a target PC, the following error message may appear:

*Copying files...
Starting remote installation service...
Deployment FAILED!*

Cause

The above error will appear when it is not possible for the target PC to remotely start the installation service used during the deployment. This could appear if the account details specified to connect to the target PCs do not have full admin permissions.

Solution

In order to check this, confirm whether you can access the Services list for the target PC. This test is run on the machine you are deploying from:

1. Right click on My Computer/Computer and select **Manage**.
2. Right click on **Computer Management** and select **Connect to another computer**.
3. Select the 'Another computer' tab and enter the target machine name you are attempting to deploy to and select **OK**.
4. This will open the Computer Management pane on the target machine.
5. Select the Services and Applications section and expand so the full list is displayed.
6. Once the list is open, select **Services** and confirm that it is possible to view the services running on the target machine.

Note: If you are unable to access the Remote Services on the destination machine, it indicates that security permission settings are restricting the remote services from being started.

CONTACTING NETSUPPORT

UK & International

www.netsupportsoftware.com

Technical Support: *support@netsupportsoftware.com*

Sales: *sales@netsupportsoftware.com*

Safeguarding: *safeguarding@netsupportsoftware.com*

North America

www.netsupport-inc.com

Technical Support: *support@netsupportsoftware.com*

Sales: *sales@netsupport-inc.com*

Canada

www.netsupport-canada.com

Technical Support: *support@netsupportsoftware.com*

Sales: *sales@netsupport-canada.com*

Germany, Austria and Switzerland

www.pci-software.de

Technical Support: *support@netsupportsoftware.com*

Sales: *sales@pci-software.de*

Japan

www.netsupportjapan.com

Technical Support: *support@netsupportsoftware.com*

Sales: *sales@netsupportjapan.com*